

H6308 ETX Module with AMD Geode LX800

Hardware Reference Guide

Version 1
2008-10-07

Hectronic AB
Box 3002
SE-750 03 UPPSALA
SWEDEN

Tel: +46 (0)18 660 700
Fax: +46 (0)18 660 701

E-mail: info@hectronic.se
Web: www.hectronic.se

Preface

Important Information

This documentation is intended for qualified audience only. The product described herein is not an end user product. It was developed and manufactured for further processing by trained personnel.

Disclaimer

Although this document has been generated with the utmost care no warranty or liability for correctness or suitability for any particular purpose is implied. The information in this document is provided “as is” and is subject to change without notice.

EMC Rules

This unit has to be installed in a shielded housing. If not installed in a properly shielded enclosure, and used in accordance with the instruction manual, this product may cause radio interference in which case the user may be required to take adequate measures at his or her own expense.

Trademarks

All used product names, logos or trademarks are property of their respective owners.

Contents

1	General Information	5
1.1	Introduction.....	5
1.2	Technical Information.....	5
2	Module Description	6
2.1	Block Diagram.....	6
2.2	CPU and Chipset	7
2.3	Memory	7
2.4	Super IO.....	8
2.5	Ethernet Controller	8
2.6	Parallel Busses	8
2.7	USB Ports.....	9
2.8	IDE Interfaces	9
2.9	System Monitor	9
2.10	Audio Subsystem	9
2.11	System Serial Busses	9
3	BIOS Description.....	10
3.1	SETUP MENUS	10
3.1.1	General Menu Navigation	10
3.1.2	Setup Main Menu.....	11
3.1.3	Motherboard Device Configuration Menu	12
3.1.4	Memory an Cache Optimization Menu	17
3.1.5	System Clock/PLL Configuration Menu	17
3.1.6	Power Management Menu.....	17
3.1.7	Miscellaneous Configuration.....	18
3.1.8	Boot Order	18
3.1.9	Password Settings	19
3.2	Network Boot Menu.....	19
3.3	BIOS Tools	19
3.3.1	Update	19
3.3.2	CMOS data	19
3.3.3	BIOS Setup Default Data.....	20
3.3.4	Force the use of CMOS default data	20
4	Technical Specification	21
5	Signal and Pin-Out Description	23
5.1	ETX Connector X1 (PCI Bus, USB, Sound).....	23
5.2	ETX Connector X2 (ISA Bus).....	26
5.3	ETX Connector X3 (VGA, LCD, Video, COMx, LPT/Floppy, Keyboard, Mouse, IRDA).....	28
5.4	ETX Connector X4 (IDE, Ethernet, Miscellaneous)	32
6	System Resources	35
6.1	Interrupt Resources.....	35
6.2	DMA Resources	35
6.3	Memory Mapping	36
6.4	IO Mapping.....	36
6.5	Device Addresses	37
6.6	I ² C bus numbering.....	37
6.7	PCI Mapping	38
6.8	System Serial Buses	39
7	Mechanical Specification	40
8	Display Connection.....	42
8.1	Display Interface	42
8.1.1	LVDS Interface.....	43
8.1.2	TTL Interface.....	45

8.1.3	Power Switch	46
8.1.4	Signals ETX Module <-> TFT Display with TTL Signalling.....	47
8.1.5	Signals ETX Module <-> TFT Display with LVDS Sign. (18 Bit)	48
8.2	Resolution and Timings.....	49
9	Power Management and Power Control	51
10	External ports COM3 and COM4	51
11	Windows Installation Hints.....	51
12	Thermal management, Environment	51
13	Post Codes	52

1 General Information

1.1 Introduction

The Hectronic H6308 CPU module is compatible to standard ETX modules which are available on the market. These CPU modules are standardized in terms of system interfaces and mechanical dimensions.

In application systems, the H6308 ETX module is mounted on a carrier board by means of four 100-pin SMD connectors. Via these connectors the standard PC interface signals for PCI- and ISA-Bus, USB, EIDE, floppy/LPT, COM, keyboard, mouse etc. as well as the power supply are provided.

The carrier board provides all application-specific functionalities and is typically a custom specific board developed by our customer. Hectronic also offer the service to design and produce custom design carrier boards for your application. Contact Hectronic for more information.

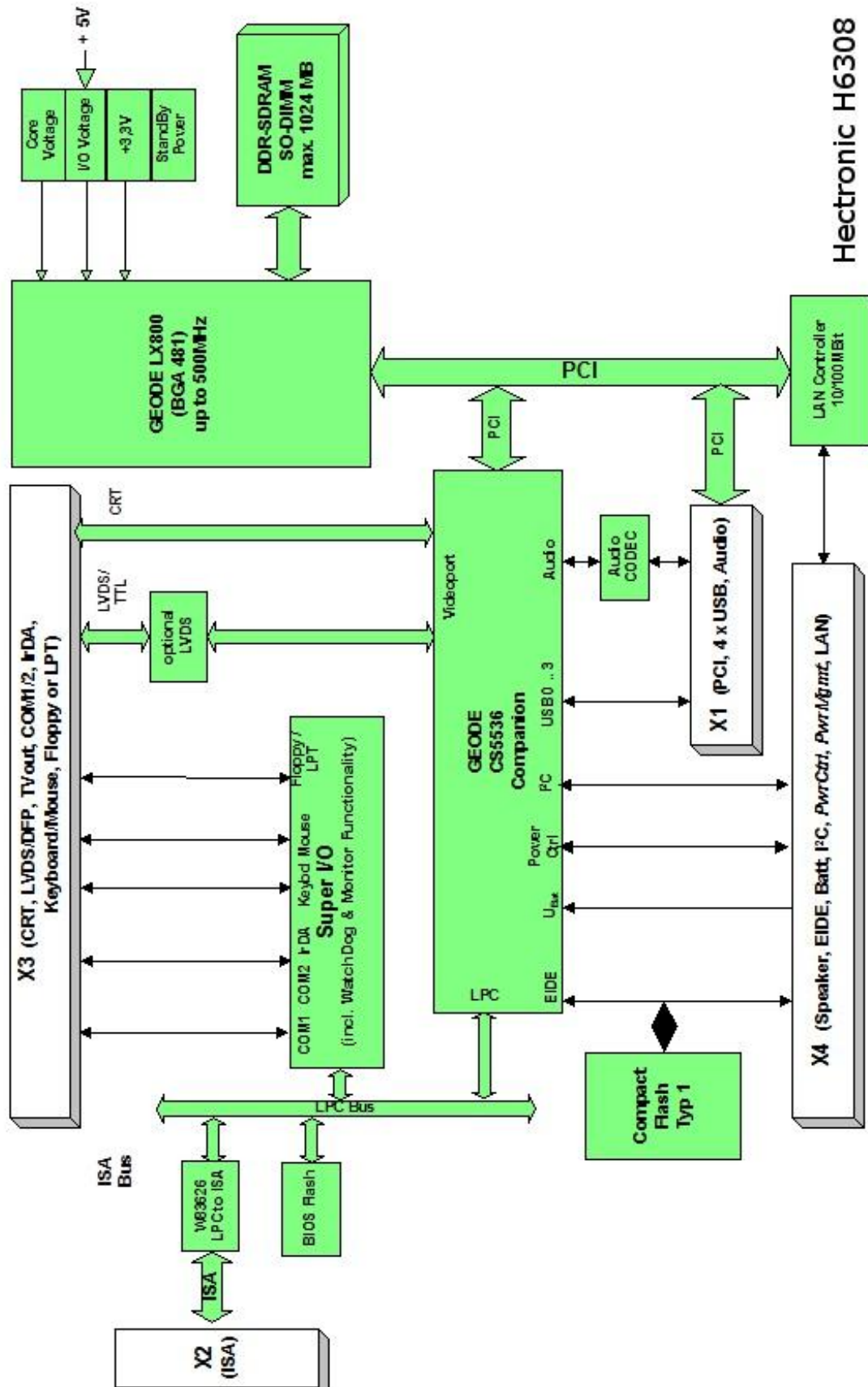
1.2 Technical Information

This document is based on the following references:

- [1] Datasheet AMD GEODE LX Processor
- [2] Datasheet AMD CS5536 Companion
- [3] Datasheet Winbond W83627HF Super IO
- [4] Datasheet Winbond W83626F LPC to ISA Bridge
- [5] Datasheet Intel 82551 Fast Ethernet Controller
- [6] PCI Bus Specification
- [7] ISA Bus Specification

2 Module Description

2.1 Block Diagram



2.2 CPU and Chipset

The Hectronic H6308 ETX module is based on the AMD processor Geode LX 800@0.9W. This processor supports the MMX and AMD 3D instruction sets. The CPU core supports different clock rates up to 500 MHz. The Northbridge is integrated in the processor chip while the Southbridge, the AMD CS5536 (called Companion), with additional functionality is a separate device.

CPU features:

- Low Power CPU with power consumption (1.6W typical at 500 MHz)
- CPU core with MMX and AMD 3D instruction set
- 64 KByte Level 1 Data-Cache, 64KByte Level 1 Instruction-Cache
- 128 KByte configurable Level 2 Cache
- ICE interface
- Floating point unit (FPU)
- Memory Management Unit (MMU)
- PCI bridge
- High performance 2D Graphics controller
- Display controller
- DDR SDRAM controller
- APM and ACPI Management

Refer to [1] for detail information

Companion features:

- PCI to LPC Bridge
- System Management Bus controller
- GPIO interface
- 8259A compatible interrupt controller
- 8254 compatible timers
- 8237 compatible DMA controller
- Bus-mastering IDE controller (1 channel, 2 devices)
- AC97 codec interface
- USB 2.0 serial interface

Refer to [2] for detail information

2.3 Memory

DDR-SDRAM

The module operates with one DDR SDRAM SO-DIMM module. Supported are 2.5 Volt modules with up to 1024 Mbyte.

CompactFlash

One CompactFlash socket for CompactFlash Type I cards, connected as master device.

BIOS Flash

The ETX module supports 4MBit Firmware Hubs.

2.4 Super IO

The module uses the Super IO chip Winbond W83627HF with the following features:

- Floppy Disc Controller (FDC)
- Two 16550 compatible UARTs
- IRDA Infrared Interface
- Parallel Port (ECP, EPP compatible)
- APM controller
- Keyboard/Mouse controller
- Real Time Clock
- Watchdog Timer

Refer to [4] for information in detail

2.5 Ethernet Controller

The Ethernet interface was built with the Intel 82551 Ethernet controller.

Refer to [5] for information in detail.

2.6 Parallel Busses

The Hectronic H6308 ETX module provides two parallel busses, the PCI bus and the ISA bus.

PCI Bus

The PCI bus meets the PCI 2.2 specification (refer to [6] for information in detail). The PCI bus implementation has 32Bit buswidth at 33MHz clock rate. The H6308 ETX module supports up to 4 external bus master.

Note: The PCI bus on the Geode LX module is not 5V TTL tolerant.

Refer to [6] for information in detail.

ISA Bus

The ISA bus meets the ISA bus specification with some restrictions: ISA Bus Masters are not supported and 16 Bit wide I/O and Memory R/W accesses are split into two consecutive 8 Bit wide accesses.

Refer to [4] and [7] for information in detail.

Note: The ISA bus signals are generated by the Winbond 83626 LPC to ISA Bridge.

2.7 USB Ports

The USB Ports are over-current protected. All four USB ports are supported by the ETX module. The USB ports meet the USB2.0 specification. Refer to [2] for information in detail.

2.8 IDE Interfaces

One enhanced IDE port with two devices (one master, one slave) is supported. Refer to [2] for information in detail. Do not connect to primary and secondary IDE port at the same time. Both ports of the ETX connector are led to the same IDE port on the module. If the on-board CF-Card connector is used, then connect the slave device (CF-Card is master) to your baseboard's secondary IDE-connector.

If two external IDE devices are used, connect both devices to either your baseboards primary or secondary channel. Do not use one device on primary, one device on secondary channel. Currently boot is only possible from IDE master device if two devices (one master, one slave) are connected.

2.9 System Monitor

The module is monitored by the Winbond W83627HF Super-IO. Refer to [3] for information in detail. Currently, four supply voltages are monitored:

- VCC CORE (1.2 V for the LX800)
- VCC CORE STANDBY (1.2 V for the LX800)
- VCC 3V3 (3.3 V)
- VCC MEM (2.5 V)

Additionally, the monitoring of the CPU die Temperature and board temperature is implemented.

2.10 Audio Subsystem

The audio subsystem of the companion chip is AC97 compliant and works together with AC97 codec LM4549 from National Semiconductor. Refer to [2] for information in detail.

2.11 System Serial Busses

The module has 4 serial buses (like I²C Bus):

- SM Bus (System Management Bus, provided by companion SM Bus controller)
- DDC Bus (Data Display Channel, provided by companion)
- FP DDC Bus (Flat-panel Data Display Channel, provided by companion)
- I²C Bus (General purpose serial bus, provided by W83627 Super IO)

3 BIOS Description

3.1 SETUP MENUS

To enter Setup: Press the F1 key while booting the system.

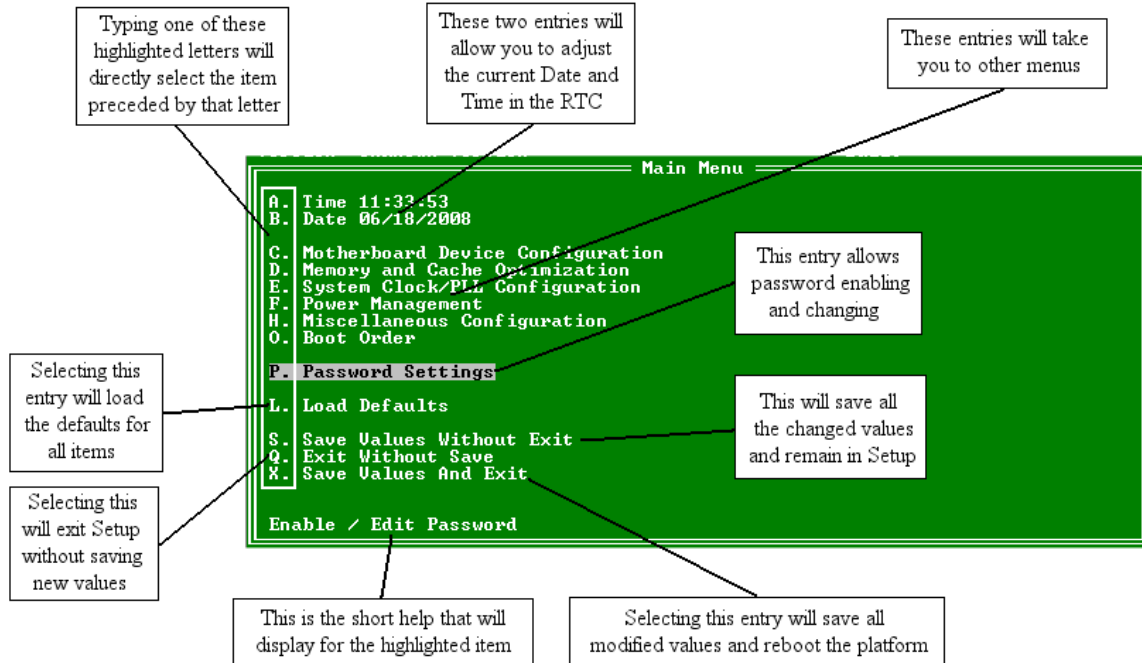
3.1.1 General Menu Navigation

To navigate within menus use the following keys:

Key	Function
Up Arrow	Highlight the item above the currently highlighted item. If on the top item will highlight the last item.
Down Arrow or Space	Highlight the item below the currently highlighted item. If on the bottom item will highlight the top item.
Left arrow	Highlight the item to the left of the currently highlighted item. If there is no item directly to the left, the rightmost item on the previous line is highlighted.
Right Arrow	Highlight the item to the right of the currently highlighted item. If there is no item directly to the right, the leftmost item on the next line will be highlighted.
Enter or a highlighted 1 st character of an item	Select the currently highlighted item. This will cycle through the Choices for an item or bring up an entry box for direct entry of a value depending on how the item is configured.
F1	Will display a Long Help for the currently highlighted item. If there is no Long Help for the item the Short Help will be displayed.
Escape	Will close the current menu and return to the previous menu. If there is no previous menu, this key will do nothing

3.1.2 Setup Main Menu

When entering Setup this is the first menu displayed.



In the following all sub menus are described tabular to get a better overview.

3.1.3 Motherboard Device Configuration Menu

Entering Motherboard Device Configuration Menu display the following sub menu items.

Item	Options	Comment
Drive Configuration	Sub Menu	Set configuration for hard drive and floppy devices
LPC Card Devices	Sub Menu	Set configuration for Onboard Super I/O devices
External Super I/O Configuration	Sub Menu	Set configuration for External Super I/O devices
Video and Flat Panel Configuration	Sub Menu	Set Video and Flat Panel Configuration
PCI Configuration	Sub Menu	Set PCI Bus Configuration
Network Configuration	Sub Menu	Set Network Configuration
Thermal Configuration	Sub Menu	Read current CPU temperature
Return to Main Menu	Upper level menu	Go back into Main Menu

Enter "External Super I/O Configuration" requires a base board with external SMSC C669 SIO

3.1.3.1 Drive Configuration Menu

Item	Options	Comment
IDE BIOS Support	Enable Disable	Enable/Disable INT 13h interface in BIOS for IDE drives
80-Conductor Cable Sense	None Force 40 Force 80 GPIO 05	No cable sense (leads to 40 conductor cable) leads to 40 conductor cable leads to 80 conductor cable auto detect cable
DMA/UDMA BIOS Support	Enabled Disabled	Enable DMA BIOS support Disable DMA BIOS support
Force mode for Drive	AUTO ...	Automatically select mode Force selected mode
Floppy Bios Support	Enable Disable	Enable/Disable all floppy support
External Floppy	Enable Disable	Enable/Disable External floppy Controller
CD-ROM Boot Bios Support	Enable Disable	Enable/Disable CD-ROM Boot option

Enabling "Floppy Bios Support" only enables the BIOS support for floppy devices. Using a floppy requires a correct setting of LPT/FLPY# to low level (LPT or Floppy Interface configuration input). Enabling "External Floppy" requires a base board with external SMSC C669 SIO.

For some USB memory sticks it may be necessary to enable "Floppy Bios Support" to make "Boot from USB" available.

3.1.3.2 LPC Card Devices

Item	Options	Comment
Serial Port 1 Serial Port 2	Disabled 3f8h, 2f8h, 3e8, 2e8h IRQ 3, 4, Disabled	Configure the onboard UART
Parallel Port A	Disabled 378h 278h 3BCh	Configure the onboard Parallel Port Address
MODE	Compatible PS/2 Bi-directional EPP 1.7 EPP 1.9 ECP	Configure the mode of the onboard Parallel Port
IRQ	Disabled IRQ 5 IRQ 7 IRQ 9 IRQ 10 IRQ 11	Configure the IRQ Used by the onboard Parallel Port
DMA	None Channel 1 Channel 3	Configure the DMA channel used in ECP mode
ISA Bus IRQ Menu	ISA disabled	Configure each IRQ as ISA or disabled, IRQs used by other devices in BIOS setup are grayed out
Watchdog Cyclic Timeout	Minutes to wait (0=disable, 1-255)	Enable/disable watchdog and set cyclic timeout (minutes). Setting 0 disables Watchdogtimer. Every other value sets delay to n minutes starting with next boot.
Watchdog Start Delay	Minutes to wait (1-255) 0 : same as "Watchdog Cyclic Timeout"	Enable/disable watchdog initial timeout (minutes). This timeout is the value for the first WDT timeout in system. Setting timeout to 0 results in delay value is used for timeout. Every other value sets timeout to n minutes starting with next boot.

Enabling "Parallel Port A" only enables the chipset device. Using the parallel port requires a correct setting of LPT/FLPY# to high level (LPT or Floppy Interface configuration input).

If you use an IRQ for the ISA bus you must not use this IRQ for any PCI interrupt.

3.1.3.3 External Super I/O Configuration Menu

Item	Options	Comment
Serial Port C Serial Port D	Disabled 3f8h, 2f8h, 3e8, 2e8h IRQ 10, 11, Disabled	Configure the external UART
Parallel Port B	Disabled 378h 278h 3BCh	Configure the onboard Parallel Port Address
MODE	Printer Mode SPP EPP 1.9 and SPP EPP 1.7 and SPP ECP ECP and EPP 1.9 ECP and EPP 1.7	Configure the mode of the onboard Parallel Port
IRQ	IRQ 5 IRQ 7	Configure the IRQ Used by the onboard Parallel Port
DMA	None Channel 2 Channel 1	Configure the DMA channel used in ECP mode

Enter "External Super I/O Configuration" requires a base board with external SMSC C669 SIO

3.1.3.4 Video and Flat Panel Configuration Menu

Item	Options	Comment
Internal Adaptor Mode	Disabled Primary Secondary	Configures the primary display if using a PCI VGA adapter
Video Memory	2.0MB - 254MB	Select the amount of memory to reserve for video
Output Display	CRT Flat Panel TV Output Panel and CRT	Select display type
Driver controls init	Enabled Disabled	If enabled OS driver has to initialize graphics HW
Flat Panel Configuration	...	Configures the flat panel

3.1.3.5 Flat Output Configuration

Item	Options	Comment
Type	EDID 2.0 EDID 1.3 TFT	Read display data from eeprom, EDID 2.0 preferred. Read display data from eeprom, EDID 1.3 preferred. Use predefined settings.
Resolution	320x240 640x480 800x600 1024x768 1152x864 1280x1024 1600x1200	Configures the output resolution
Data BusType	9-24 bits, 1ppc	The only data bus type
Refresh Rate	60 Hz 70 Hz 72 Hz 75 Hz 85 Hz 90 Hz 100 Hz	
HSYNC Polarity	Active low Active high	The horizontal synchronization pulse polarity
VSYNC Polarity	Active low Active high	The vertical synchronization pulse polarity
LP Active Period	Active only Free running	Data enable
SHFCLK Active Period	Active only Free running	How to use pixel clock

When using the BIOS in the flat panel EDID mode it is recommended to set the TFT data to the expected resolution to get a display even if there are no EDID data available.

3.1.3.6 PCI Configuration Menu

Item	Options	Comment
PCI INTA#	Disable, IRQ 1, IRQ 3, IRQ 4, IRQ 5, IRQ 6, IRQ 7, IRQ 9, IRQ 10, IRQ 11, IRQ 12, IRQ 14, IRQ 15	Enable/Disable INTA# to IRQ steering
PCI INTB#	Same as above	Enable/Disable INTB# to IRQ steering
PCI INTC#	Same as above	Enable/Disable INTC# and internal USB to IRQ steering
PCI INTD#	Same as above	Enable/Disable INTD# and on-board LAN to IRQ steering
USB 2.0 OHCI	Enable Disable	Enable/Disable OHCI PCI header
USB 2.0 EHCI	Enable Disable	Enable/Disable EHCI PCI header
USB Legacy Support	Enable Disable	Enable/Disable USB Legacy Support after BIOS starts booting to OS
USB 2.0 Overcurrent Reporting	Disable	Enables/Disables reporting via USB registers

3.1.3.7 Network Configuration Menu

Item	Options	Comment
Network boot	Enable Disable	Enable/Disable network boot

3.1.3.8 Thermal Configuration Menu

Item	Options	Comment
Current CPU Temperature Current Ambient Temp. Current Board Temperature	...	Every key return reads the current temperature

3.1.4 Memory an Cache Optimization Menu

Item	Options	Comment
Cache Enable	Enable Disable	Enables/Disables the memory cache
Cache Mode	Write-Back Write-Through	Select the memory cache mode
Cache Allocate	Enable Disable	
Memory Optimization	Auto	for information only
CAS Latency	Auto	for information only
Refresh Rate	Auto	for information only
Memory Latencies	Auto	for information only

3.1.5 System Clock/PLL Configuration Menu

Item	Options	Comment
Clock Determined By	Manual Settings	Usage of below defined PLL settings
CPU Multiplier	7-15	Multiplier * 33Mhz = CPU Speed
GeodeLink Multiplier	7-10	Multiplier * 33Mhz = Geode Link Speed

3.1.6 Power Management Menu

Item	Options	Comment
BIOS PM at Boot	Disabled Enabled	Turns on legacy PM before booting OS
APM Available	No Yes	APM interface available for use
ACPI Available	No Yes	ACPI interface available for use
S1 Clock	On Off	Controls the external clock generator in S1
CPU Clock Gating	Enabled Disabled	Set to Enabled for power saving
Chipset Clock Gating	Enabled Disabled	Set to Enabled for power saving

3.1.7 Miscellaneous Configuration

Item	Options	Comment
Splash Screen	Enable Disable	Enable/Disable display of splash screen
Clear Splash Screen	Enable Disable	Enable/Disable clearing of splash screen after display (if enabled)
Splash Screen Timeout	Milliseconds to wait (0=no wait, 1-65535)	Enable/Disable splash screen delay/timeout after display (if enabled)
Display text	Enable Disable	Enable/Disable display of all BIOS output texts
Summary Screen	Enable Disable	Enable/Disable display of summary screen
Summary Screen Timeout	Milliseconds to wait (0=no wait, 1-65535)	Enable/Disable summary screen delay/timeout after display (if enabled)
Power Button	Disabled Enabled AT board compatible	Enable: Use ACPI Mode 4 second soft off. Disable: ACPI Mode is disabled after power on. AT mode: Power button is completely disabled after power on. You have to remove power to activate the new setting.
AC Beeper	Disabled Enabled	Enables/disables PC speaker
CMOS Option Configuration	0-20 (0=disabled)	Number of failed boots before reset CMOS data. After a number of failed boots the CMOS data becomes resetted to BIOS default values

3.1.8 Boot Order

Item	Options	Comment
1.	None Floppy Disk USB Floppy Disk Hard Drive Master Hard Drive Slave CD-ROM Drive USB Hard Drive/Flash USB CD-ROM Drive	Specifies first boot device
2.	Same as above	Specifies second boot device
3.	Same as above	Specifies third boot device
4.	Same as above	Specifies fourth boot device
5.	Same as above	Specifies fifth boot device
6.	Same as above	Specifies sixth boot device

3.1.9 Password Settings

Item	Options	Comment
Use Setup Password	Disabled Enabled	Disable / Enable Call for Password
Edit Password	Password characters (1-64)	Type in password two times

3.2 Network Boot Menu

If network boot is enabled in Bios Setup, it can be configured by pressing “CTRL – S” during POST. A network boot menu “Intel® Boot Agent FE v4.1.16” is shown with the following settings:

Item	Options	Comment
Network Boot Protocol	PXE	Only this setting available
Boot Order	Try network first, then local drives Try local drives first, then network Try network only Try local drives only	Select the position of the network boot.in the boot order.
Show Setup Prompt	Enable Disable	Enables/disables if “Please press CTRL – S to enter ...” sentence is shown..
Setup Menu Wait Time	Seconds to wait (0-5 seconds)	Select how long the sentence “Please press CTRL – S to enter ...” is shown.

Press Space to change the highlighted value. Press enter to highlight the next option. Press ESC to leave menu without changes. Press F4 to save configuration.

3.3 BIOS Tools

There are some useful tools for BIOS update and cmos data handling. All tools need a DOS like MS DOS 6.22 with memory manager himem.sys to run properly.

3.3.1 Update

Flashrom.com is used to update the contents of the flash ROM of your H6308 with a new version of the Bios.

Example of usage:

```
flashrom /sFFFC0000 <file_name>
```

After successfully flashing the new bios contents, you must perform a power cycle. During the first boot you have to go into the BIOS setup and load bios defaults.

3.3.2 CMOS data

To save current CMOS data for later usage you may use the tool “CMOS.EXE”.

Saving :

```
cmos -s <file_name>
```

Restoring :

```
cmos -r <file_name>
```

3.3.3 BIOS Setup Default Data

It is sometimes necessary to have special default data used in production BIOS. There is a tool to patch the current setup data to the BIOS file.

By using "GlxPatch.exe" the current setup stored in CMOS ram is patched to the BIOS update file "xpress.rom". There is no other destination possible. The file "xpress.rom" is used from the current directory!

Usage :

1. Update the BIOS :
`flashrom /sfffc0000 xpress.rom`
2. New CMOS data
Use BIOS setup to configure the CMOS data.
3. Patch the default data
`glxpatch`
Now the file xpress.rom is updated with the new default data.
4. Personalize BIOS
Rename file xpress.rom to your preferred file name <file_name>
5. Use the new BIOS
`flashrom /sfffc0000 <file_name>`

3.3.4 Force the use of CMOS default data

There are situations when it is useful to have the CMOS ram set with the default data when starting the BIOS. This can be managed from the DOS prompt with the following program call :

```
forcdflt
```

When the BIOS is started the next time it sets the default values to CMOS and E²Prom then boots again.

4 Technical Specification

Technical Specification:

Function	Hectronic H6308 ETX Module
CPU	AMD GEODE LX 800@0.9W, BGA481
CPU Speed	500 MHz (slower speeds may be configured via BIOS)
Cache	64Kbyte Level 1 I, 64Kbyte Level 1 D, 128Kbyte Level 2
Chipset	CS5536 Geode Companion, BGA208
Super IO	Winbond 83627HF
DRAM	max. 1024 MByte DDR SDRAM
Socket	SO-DIMM 200pin
EIDE Interface	One enhanced IDE ports (one channel, two devices)
Flashdisk	Optional CompactFlash Interface Type I (using one IDE Channel)
Floppy	Floppy Interface (shared with LPT)
Parallel Interface	ECP / EPP (shared with Floppy)
Serial Interface	2 x TTL 16550 compatible
Infrared	IrDA 1.0 compliant port (currently not supported by BIOS)
Keyboard	PS/2
Mouse	PS/2
USB ports	4 x USB 2.0
PCI	32Bit / 33MHz / 3V3only
Master support	Standard: one external PCI Master with option Arbiter Extension: up to four external PCI Master
Video Controller	Integrated in CPU
Video memory	TBD
Video resolution	CRT: max. 1,920x1,440x32 bpp @ 85Hz, LCD: max. 1,600x1,200x32 bpp @ 60Hz
Display support	TFT, CRT
Display Interface	option TTL: 18/24 Bit TTL Level Interface option LVDS: 18 Bit LVDS Interface, support of 24 Bit LVDS Displays has to be checked for each display in detail
TV Video signals	option TV Out onboard TV controller
CRT configuration	with CRT DDC (Display Data Channel)
Flat Panel configuration	with FPDDC (Flat Panel Display Data Channel)
Ethernet Controller	Intel 82551
Ethernet Interface	10 or 100 MHz with auto detection
Sound Controller	AC97 compliant with external Codec LM4549
Sound Interface	Line level input/output and Microphone via ETX header
Real Time Clock	yes, companion CS5536
Watchdog Timer	yes, companion CS5536
SM Bus support	yes

I²C Bus yes
 System monitoring Board-Temperature, Voltage Supervision

BIOS

Sytem BIOS INSYDE BIOS
 VGA BIOS INSYDE BIOS
 Boot devices Floppy, Harddisc, CD-ROM, USB-Stick, Ethernet
 Boot options TBD
 Power Management yes
 USB legacy support yes
 USB Floppy Boot yes
 Flash Update via Floppy or HDD

Supply Voltage Standard Power + 5V0DC, 5%
 Supply Voltage Battery Power + 3V3DC +0,3V / -0,9V
 Current consumption 5V0DC 266Mhz: + 5V, ~1,1A typ, max. ~1,4A
 500Mhz: + 5V, ~1,3A typ, max. ~1,8A
 Current consumption Battery Power ~ 10uA typ.

Temperature operation: 0° to 60°C storage: -10° to 85°C
 Humidity operation: 10% to 90% storage: 5% to 95% (non-condensing)
 Mechanical Dimension
 Dimension 95 x 114 mm (3.7" x 4.5")
 Thickness (Bottom + Top) ≤12mm

5 Signal and Pin-Out Description

5.1 ETX Connector X1 (PCI Bus, USB, Sound)

Signal	Description	I/O	Note
VCC	Power Supply +5VDC, 5%	I	external supply
GND	Power Ground	I	external supply
3V	Power Supply +3V3DC	O	Do not use externaly
N.C.	Not connected	n.a.	Do not connect
SERIRQ	Serial interrupt request	n.c.	Not supported

Signal	Description of PCI Bus Signals	I/O	Note
PCICLK1..4.	PCI clock output	O	
REQ0..3#	PCI bus request	I	PCI signals not 5V0 compliant
GNT0..3#	PCI bus grant	O	
AD0..31	PCI Adress-/ Databus	I/O	PCI signals not 5V0 compliant
CBE0..3#	PCI bus command/byte enables	I/O	PCI signals not 5V0 compliant
PAR	PCI bus parity	I/O	PCI signals not 5V0 compliant
SERR#	PCI bus system error	I/O	PCI signals not 5V0 compliant
GPERR#	PCI bus grant parity error	I/O	PCI signals not 5V0 compliant
PME#	PCI bus power management event	I/O	Not supported
LOCK#	PCI bus lock	I/O	PCI signals not 5V0 compliant
DEVSEL#	PCI bus device select	I/O	PCI signals not 5V0 compliant
TRDY#	PCI bus target ready	I/O	PCI signals not 5V0 compliant
IRDY#	PCI bus initiator ready	I/O	PCI signals not 5V0 compliant
STOP#	PCI bus stop	I/O	PCI signals not 5V0 compliant
FRAME#	PCI bus frame	I/O	PCI signals not 5V0 compliant
PCIRST#	PCI bus reset	O	Asserted with power on reset, ext. reset input and CPU reset
INTA#	PCI bus interrupt A	I	PCI signals not 5V0 compliant

INTB#	PCI bus interrupt B	I	PCI signals not 5V0 compliant
INTC#	PCI bus interrupt C	I	PCI signals not 5V0 compliant
INTD#	PCI bus interrupt D	I	PCI signals not 5V0 compliant

Signal	Description of USB Signals	I/O	Note
USB0, USB0#	USB Port 0	I/O	
USB1, USB1#	USB Port 1	I/O	
USB2, USB2#	USB Port 2	I/O	
USB3, USB3#	USB Port 3	I/O	

Signal	Description of Audio Signals	I/O	Note
SNDL	Line-Level stereo output left	O	
SNDR	Line-Level stereo output right	O	
AUXAL	Auxiliary input A left	I	
AUXAR	Auxiliary input A right	I	
MIC	Microphone input	I	
ASGND	Analog ground of sound controller	I	
ASVCC	Analog supply of sound controller	I	

Pin	Signal	Pin	Signal	Pin	Signal	Pin	Signal
1	GND	2	GND	51	VCC	52	VCC
3	PCICLK3	4	PCICLK4	53	PAR	54	SERR#
5	GND	6	GND	55	GPERR#	56	Reserved
7	PCICLK1	8	PCICLK2	57	PME#	58	USB2#
9	REQ3#	10	GNT3#	59	LOCK#	60	DEVSEL#
11	GNT2#	12	3V	61	TRDY#	62	USB3#
13	REQ2#	14	GNT1#	63	IRDY#	64	STOP#
15	REQ1#	16	3V	65	FRAME#	66	USB2
17	GNT0#	18	RESERVED	67	GND	68	GND
19	VCC	20	VCC	69	AD16	70	CBE2#
21	RIRQ	22	REQ0#	71	AD17	72	USB3
23	AD0	24	3V	73	AD19	74	AD18
25	AD1	26	AD2	75	AD20	76	USB0#
27	AD4	28	AD3	77	AD22	78	AD21
29	AD6	30	AD5	79	AD23	80	USB1#
31	CBE0#	32	AD7	81	AD24	82	CBE3#
33	AD8	34	AD9	83	VCC	84	VCC
35	GND	36	GND	85	AD25	86	AD26
37	AD10	38	AUXAL	87	AD28	88	USB0
39	AD11	40	MIC	89	AD27	90	AD29
41	AD12	42	AUXAR	91	AD30	92	USB1
43	AD13	44	ASVCC	93	PCIRST#	94	AD31
45	AD14	46	SNDL	95	INTC#	96	INTD#
47	AD15	48	ASGND	97	INTA#	98	INTB#
49	CBE1#	50	SNDR	99	GND	100	GND

5.2 ETX Connector X2 (ISA Bus)

Signal	Description	I/O	Note
VCC	Power Supply +5VDC, 5%	I	external supply
GND	Power Ground	I	external supply
N.C.	Not connected	n.a.	Do not connect

Signal	Description of ISA Bus Signals	I/O	Note
SD0..15	ISA Databus	I/O	5V0 signal level, 5V0 compliant
SA0..19	ISA Addressbus	O	SA0..15 : 5V0 signal level
SBHE#	ISA Byte High Enable	O	5V0 signal level
BALE	ISA Address Latch Enable	O	5V0 signal level
AEN	ISA Address Enable	O	5V0 signal level
MEMR#	ISA memory read	O	5V0 signal level
SMEMR#	ISA memory read in lowest 1MB address range	O	5V0 signal level
MEMW#	ISA memory write	O	5V0 signal level
SMEMW#	ISA memory write in lowest 1MB address range	O	5V0 signal level
IOR#	ISA IO read	O	5V0 signal level
IOW#	ISA IO write	O	5V0 signal level
IOCHK#	ISA IO check	I	5V0 compliant
IOCHRDY	ISA IO channel ready	I	5V0 compliant
M16#	ISA 16Bit memory device	I	5V0 compliant
IO16#	ISA 16Bit IO device	I	5V0 compliant
REFSH#	ISA memory refresh cycle pending	O	5V0 signal level
NOWS#	ISA Now waitstates	I	5V0 compliant
MASTER#	ISA Master	n.c.	Not supported on H6308
SYSCLK	ISA System clock (8 MHz)	O	5V0 signal level
OSC	ISA Oscilator (14,31818 MHz)	O	5V0 signal level
RESETDRV	ISA Reset signal	O	Asserted with power on reset and ext. reset input not with CPU reset!
DREQ0,1,2,3,5,6,7	ISA DMA request	I	5V0 compliant
DACK#0,1,2,3,5,6,7	ISA DMA acknowledge	O	5V0 signal level
TC	ISA DMA end	O	5V0 signal level
IRQ03..7,9..15	ISA Interrupt request	I/O	5V0 signal level, 5V0 compliant

Pin	Signal	Pin	Signal	Pin	Signal	Pin	Signal
1	GND	2	GND	51	VCC	52	VCC
3	SD14	4	SD15	53	SA6	54	IRQ5
5	SD13	6	NC (MASTER#)	55	SA7	56	IRQ6
7	SD12	8	DREQ7	57	SA8	58	IRQ7
9	SD11	10	DACK7#	59	SA9	60	SYSCLK
11	SD10	12	DREQ6	61	SA10	62	REFSH#
13	SD9	14	DACK6#	63	SA11	64	DREQ1
15	SD8	16	DREQ5	65	SA12	66	DACK1#
17	MEMW#	18	DACK5#	67	GND	68	GND
19	MEMR#	20	DREQ0	69	SA13	70	DREQ3
21	LA17	22	DACK0#	71	SA14	72	DACK3#
23	LA18	24	IRQ14	73	SA15	74	IOR#
25	LA19	26	IRQ15	75	SA16	76	IOW#
27	LA20	28	IRQ12	77	SA18	78	SA17
29	LA21	30	IRQ11	79	SA19	80	SMEMR#
31	LA22	32	IRQ10	81	IOCHRDY	82	AEN
33	LA23	34	IO16#	83	VCC	84	VCC
35	GND	36	GND	85	SD0	86	SMEMW#
37	SBHE#	38	M16#	87	SD2	88	SD1
39	SA0	40	OSC	89	SD3	90	NOWS#
41	SA1	42	BALE	91	DREQ2	92	SD4
43	SA2	44	TC	93	SD5	94	IRQ9
45	SA3	46	DACK2#	95	SD6	96	SD7
47	SA4	48	IRQ3	97	IOCHK#	98	RSTDRV
49	SA5	50	IRQ4	99	GND	100	GND

5.3 ETX Connector X3 (VGA, LCD, Video, COMx, LPT/Floppy, Keyboard, Mouse, IRDA)

Signal	Description	I/O	Note
VCC	Power Supply +5VDC, 5%	I	external supply
GND	Power Ground	I	external supply
N.C.	Not connected	n.a.	Do not connect
LTGIO0..2	General Purpose IO	I/O	

Signal	Description of analog CRT signals	I/O	Note
HSYNC	Horizontal Synchronimpuls	O	
VSYNC	Vertikal Synchronimpuls	O	
R	Red channel RGB Analog Video Output	O	
G	Green channel RGB Analog Video Output	O	
B	Blue channel RGB Analog Video Output	O	
DDCK	Display Data Channel Clock	I/O	3V3 signal level, 5V0 compliant
DDDA	Display Data Channel Data	I/O	3V3 signal level, 5V0 compliant

Signal	Description of TV signals (option)	I/O	Note
SYNC	Composite sync	O	
Y	Luminance for S-Video or Red for SCART	O	
C	Chrominance for S-Video or Green for SCART	O	
Comp	Composite Video or Blue for SCART	O	

Signal	Description of COMx signals	I/O	Note
DTR1..2#	Data terminal ready of COM1/COM2	O	5V0 signal level
RI1..2#	Ring indicator of COM1/COM2	I	5V0 compliant
TXD1..2	Data transmit of COM1/COM2	O	5V0 signal level
RXD1..2	Data receive of COM1/COM2	I	5V0 compliant
CTS1..2#	Clear to send of COM1/COM2	I	5V0 compliant
RTS1..2#	Request to send of COM1/COM2	O	5V0 signal level
DCD1..2#	Data carrier detect of COM1/COM2	I	5V0 compliant
DSR1..2#	Data set ready of COM1/COM2	I	5V0 compliant

Signal	Description of keyboard and infrared signals	I/O	Note
KBDAT	Keyboard Data	I/O	5V0 signal level
KBCLK	Keyboard Clock	O	5V0 signal level
MSDAT	Mouse Data	I/O	5V0 signal level
MSCLK	Mouse Clock	O	5V0 signal level
IRTX	Infrared Transmit	O	5V0 signal level
IRRX	Infrared Receive	I	

Signal	Description of FDC signals (shared with LPT)	I/O	Note
LPT/FLPY#	LPT or Floppy Interface configuration input	I	Connect to GND
STB#/RES	nc	-	
AFD#/DENSEL	density select: low = 250/300Kb/s high = 500/1000Kb/s	O	5V0 signal level
PD0/INDEX#	Index signal	I	5V0 compliant
PD1/TRK0#	Track signal	I	5V0 compliant
PD2/WP#	Write protect signal	I	5V0 compliant
PD3/RDATA#	Raw data read	I	5V0 compliant
PD4/DSKCHG#	Disc changed	I	5V0 compliant
PD5/RES	nc	-	
PD6/RES	nc	-	
PD7/RES	nc	-	
ERR#/HDSEL#	Head select	O	5V0 signal level
INIT#/DIR#	Direction	O	5V0 signal level
SLIN#/STEP#	Motor step	O	5V0 signal level
ACK/DRV1	Drive 1 select	O	5V0 signal level
BUSY#/MOT1#	Motor 1 select	O	5V0 signal level
PE/WDATA#	Raw write data	O	5V0 signal level
SLCT#/WGATE #	Write enable	O	5V0 signal level

Signal	Description of LPT signals (shared with FDC)	I/O	Note
LPT/FLPY#	LPT or Floppy Interface configuration input	I	Connect to VCC (resistor 4K7)
STB#/RES	Strobe signal	O	5V0 signal level
AFD#/DENSEL	Automatic feed	O	5V0 signal level
PD0/INDEX#	Databus D0	I/O	5V0 signal level
PD1/TRK0#	Databus D1	I/O	5V0 signal level
PD2/WP#	Databus D2	I/O	5V0 signal level
PD3/RDATA#	Databus D3	I/O	5V0 signal level
PD4/DSKCHG#	Databus D4	I/O	5V0 signal level
PD5/RES	Databus D5	I/O	5V0 signal level
PD6/RES	Databus D6	I/O	5V0 signal level
PD7/RES	Databus D7	I/O	5V0 signal level
ERR#/HDSEL#	LPT error	I	5V0 compliant
INIT#/DIR#	Initiate	O	5V0 signal level
SLIN#/STEP#	Select	O	5V0 signal level
ACK/DRV1	Acknowledge	I	5V0 compliant
BUSY#/MOT1#	Busy	I	5V0 compliant
PE/WDATA#	Paper empty	I	5V0 compliant
SLCT#/WGATE #	Power ON	I	5V0 compliant

Signal	Description of LVDS flat-panel signals	I/O	Note
BIASON	Display contrast voltage ON	O	
DIGON	Display Power ON	O	
BLON#	Display Backlight ON	O	
LCDDO0..19	LVDS channel data 0..19	O	

Signal	Description of TTL flat-panel signals	I/O	Note
BIASON	Display contrast voltage ON	O	
DIGON	Display Power ON	O	
BLON#	Display Backlight ON	O	
R0..5, B0..5, G0..5	RGB Signals	O	

Standard Pinning with LVDS/TTL signals

Pin	Signal	Pin	Signal	Pin	Signal	Pin	Signal
1	GND	2	GND	51	LPT/FLPY#	52	RESERVED
3	R	4	B	53	VCC	54	GND
5	HSY	6	G	55	STB#/RES	56	AFD#/DENSEL
7	VSY	8	DDCK	57	RESERVED	58	PD7/RES
9	DETECT#	10	DDDA	59	IRRX	60	ERR#/HDSEL#
11	LCDDO16 / B4	12	LCDDO18 / SHFCLK	61	IRTX	62	PD6/RES
13	LCDDO17 / B5	14	LCDDO19 / EN	63	RXD2	64	INIT#/DIR#
15	GND	16	GND	65	GND	66	GND
17	LCDDO13 / B1	18	LCDDO15 / B3	67	RTS2#	68	PD5/RES
19	LCDDO12 / B0	20	LCDDO14 / B2	69	DTR2#	70	SLIN#/STEP#
21	GND	22	GND	71	DCD2#	72	PD4/DSKCHG#
23	LCDDO8 / G2	24	LCDDO11 / G5	73	DSR2#	74	PD3/RDATA#
25	LCDDO9 / G3	26	LCDDO10 / G4	75	CTS2#	76	PD2/WP#
27	GND	28	GND	77	TXD2#	78	PD1/TRK0#
29	LCDDO4 / R4	30	LCDDO7 / G1	79	RI2#	80	PD0/INDEX#
31	LCDDO5 / R5	32	LCDDO6 / G0	81	VCC	82	VCC
33	GND	34	GND	83	RXD1	84	ACK#/DRV1
35	LCDDO1 / R1	36	LCDDO3 / R3	85	RTS1#	86	BUSY#/MOT1#
37	LCDDO0 / R0	38	LCDDO2 / R2	87	DTR1#	88	PE/WDATA#
39	VCC	40	VCC	89	DCD1#	90	SLCT#/WGATE#
41	FPDDC_DAT	42	LTGIO0 / VSYNC	91	DSR1#	92	MSCLK
43	FPDDC_CLK	44	BLON#	93	CTS1#	94	MSDAT
45	BIASON / HSYNC	46	DIGON	95	TXD1	96	KBCLK
47	COMP	48	Y	97	RI1#	98	KBDAT
49	SYNC	50	C	99	GND	100	GND

5.4 ETX Connector X4 (IDE, Ethernet, Miscellaneous)

Signal	Description	I/O	Note
VCC	Power Supply +5VDC, 5%	I	external supply
GND	Power Ground	I	external supply
N.C.	Not connected	n.a.	Do not connect

Signal	Description of IDE signals	I/O	Note
PIDE_D0..15	Primary IDE Databus	I/O	3V3 signal level, 5V0 compliant
PIDE_A0..2	Primary IDE Addressbus	O	3V3 signal level
PIDE_CS1#	Primary IDE chip select channel0	O	3V3 signal level
PIDE_CS3#	Primary IDE chip select channel1	O	3V3 signal level
PIDE_DRQ	Primary IDE dma request	I	5V0 compliant
PIDED_AK#	Primary IDE dma acknowledge	O	3V3 signal level
PIDE_RDY	Primary IDE ready	I	5V0 compliant
PIDE_IOR#	Primary IDE IO read	O	3V3 signal level
PIDE_IOW#	Primary IDE IO write	O	3V3 signal level
PIDE_INTRQ	Primary IDE interrupt request	I	5V0 compliant
SIDE_D0..15	Secondary IDE Databus	I/O	Parallel to PIDE
SIDE_A0..2	Secondary IDE Addressbus	O	Parallel to PIDE
SIDE_CS1#	Secondary IDE chip select channel0	O	Parallel to PIDE
SIDE_CS3#	Secondary IDE chip select channel1	O	Parallel to PIDE
SIDE_DRQ	Secondary IDE dma request	I	Parallel to PIDE
SIDED_AK#	Secondary IDE dma acknowledge	O	Parallel to PIDE
SIDE_RDY	Secondary IDE ready	I	Parallel to PIDE
SIDE_IOR#	Secondary IDE IO read	O	Parallel to PIDE
SIDE_IOW#	Secondary IDE IO write	O	Parallel to PIDE
SIDE_INTRQ	Secondary IDE interrupt request	I	Parallel to PIDE
DASP_S	Secondary IDE Drive active	O (OC)	Connected to onboard CFC
PDIAG_S	Secondary IDE Master/Slave negotiation	I	Connected to onboard CFC
HDRST#	HardDrive reset	O	3V3 signal level
CSLID_P#	Not supported	n.a.	

Signal	Description of Ethernet signals	I/O	Note
TXD+, TXD-	Ethernet Twisted Pair transmit signal pair	O	Twisted pair signals for external transformer
RXD+, RXD-	Ethernet Twisted Pair receive signal pair	I	Twisted pair signals for external transformer
ACTLED	Ethernet activity LED	O	3V3 signal level
LILED	Ethernet link LED	O	3V3 signal level
SPEEDLED	Ethernet speed LED, ON at 100Mb/s	O	3V3 signal level

Signal	Description of Misc. signals	I/O	Note
SPEAKER	Speaker output	O	3V3 signal level Connect the speaker between SPEAKER and VCC
BATT	Battery supply	I	External RTC_Supply (Un = 3V0)
PWGIN	Power good input	I	3V3 signal level Also usable as reset input
I ² CLK	I ² C Bus clock	O	5V0 signal level, 5V0 compliant
I ² DAT	I ² C Bus Data	I/O	5V0 signal level, 5V0 compliant
SMBCLK	SM Bus clock	O	3V3 signal level, 5V0 compliant
SMBDAT	SM Bus Data	I/O	3V3 signal level, 5V0 compliant
SMBALRT#	SM Bus Event	I/O	
KBINH	Keyboard inhibit	I	5V0 compliant
5V_SB	Supply of internal suspend circuit	I	
PS_ON	Power Save ON	O	5V0 signal level
PWRBTN#	Power Button	I	5V0 compliant
OVCR#	Over current detect for USB	I	5V0 compliant
ROMKBCS#	Do not connect	n.a.	
EXT_PRG#	Not supported	n.a.	
WDTRIG#	Do not connect	n.a.	
GPCS#	Not supported	n.a.	
GPE1#	Not supported	n.a.	
GPE2#	Not supported	n.a.	
BATLOW#	Battery low alarm	I	
EXTSMI#	Not supported	n.a.	

Pin	Signal	Pin	Signal	Pin	Signal	Pin	Signal
1	GND	2	GND	51	SIDE_IOW#	52	PIDE_IOR#
3	5V_SB	4	PWGIN	53	SIDE_DRQ	54	PIDE_IOW#
5	PS_ON	6	SPEAKER	55	SIDE_D15	56	PIDE_DRQ
7	PWRBTN#	8	BATT	57	SIDE_D0	58	PIDE_D15
9	KBINH	10	LILED	59	SIDE_D14	60	PIDE_D0
11	WDTRIG	12	ACTLED	61	SIDE_D1	62	PIDE_D14
13	ROMKBCS#	14	SPEEDLED	63	SIDE_D13	64	PIDE_D1
15	EXT_PRG	16	I2CLK	65	GND	66	GND
17	VCC	18	VCC	67	SIDE_D2	68	PIDE_D13
19	OVCR#	20	GPCS#	69	SIDE_D12	70	PIDE_D2
21	EXTSMI#	22	I2DAT	71	SIDE_D3	72	PIDE_D12
23	SMBCLK	24	SMBDATA	73	SIDE_D11	74	PIDE_D3
25	SIDE_CS3#	26	SMBALRT#	75	SIDE_D4	76	PIDE_D11
27	SIDE_CS1#	28	DASP_S	77	SIDE_D10	78	PIDE_D4
29	SIDE_A2	30	PIDE_CS3#	79	SIDE_D5	80	PIDE_D10
31	SIDE_A0	32	PIDE_CS1#	81	VCC	82	VCC
33	GND	34	GND	83	SIDE_D9	84	PIDE_D5
35	PDIAG_S	36	PIDE_A2	85	SIDE_D6	86	PIDE_D9
37	SIDE_A1	38	PIDE_A0	87	SIDE_D8	88	PIDE_D6
39	SIDE_INTRQ	40	PIDE_A1	89	GPE2#	90	CBLID_P#
41	BATLOW#	42	GPE1#	91	RXD#	92	PIDE_D8
43	SIDE_AK#	44	PIDE_INTRQ	93	RXD	94	SIDE_D7
45	SIDE_RDY	46	PIDE_AK#	95	TXD#	96	PIDE_D7
47	SIDE_IOR#	48	PIDE_RDY	97	TXD	98	HDRST#
49	VCC	50	VCC	99	GND	100	GND

6 System Resources

6.1 Interrupt Resources

Interrupt	Usage	Available	Note
IRQ 0	Timer0	No	
IRQ 1	Keyboard	No	
IRQ 2	Cascade	No	
IRQ 3	COM B	No	Note 1
IRQ 4	COM A	No	Note 1
IRQ 5	PCI	No	
IRQ 6	FDC	No	Note 1
IRQ 7	LPT1	No	Note 1
IRQ 8	RTC	No	
IRQ 9	PCI	Yes	
IRQ 10	PCI, COM D	Yes	Note 2
IRQ 11	PCI, COM C	Yes	Note 2
IRQ 12	PS2 Mouse	No	
IRQ 13	FPU	No	
IRQ 14	IDE0	No	Note 1
IRQ 15	-	Yes	

6.2 DMA Resources

DMA	Usage	Available	Note
DMA 0	Not used	Yes	
DMA 1	Sound	No	Note 1
DMA 2	FDC	No	Note 1
DMA 3	Not used	Yes	
DMA 4	Cacade	No	
DMA 5	Sound	No	Note 1
DMA 6	Not used	Yes	
DMA 7	Not used	Yes	

Note 1: If the device mentioned in "Usage" is disabled in Setup Menu, this interrupt is available.

Note 2: Only used if the base board is equipped with a FDC37C669 SIO chip and the corresponding COM ports are enabled.

6.3 Memory Mapping

Memory address range	Usage	Available	Note
9FC00h – 9FFFFh	Enhanced BIOS Data Area	No	
C0000h - C7FFFh	VGA BIOS	No	
C8000h - CFFFFh	External PCI VGA Bios or Not used	Yes	
D0000h - DFFFFh	Network Boot or Not used	Yes	Note 1
E0000h - EFFFFh	Virtual System Architecture	No	
F0000h - FFFFFh	System BIOS	No	

Note 1: If network boot is enabled, D0000h – DBFFFh is used for the network boot ROM.

6.4 IO Mapping

The Hectronic H6308 has the same IO port usage as a standard AT-PC. Nevertheless there are few additional ports used as specified in the following table.

IO address range	Usage	Available	Note
02Eh - 02Fh	Configuration space for internal controller	No	
200h - 20Fh	Reserved for system use	No	
2E8h - 2EFh	COM D	No	Note 1
295h - 296h	Hardware monitor	No	only if equipped
330h - 33Fh	Reserved for system use	No	
370h - 371h	Configuration space for SMC controller	No	Note 1
3E8h - 3EFh	COM C	No	Note 1
6000h - 60FFh	SM Bus IO Base	No	
6100h - 61FFh	GPIO IO Base	No	
6200h - 62FFh	General Purpose Timers IO Base	No	
6300h - 63FFh	IRQ Mapper IO Base	No	
9C00h - 9CFF	ACPI IO Base	No	
9D00h - A000h	PM IO Base	No	

Note 1: Only available/reserved if the base board is equipped with a FDC37C669 SIO chip.

6.5 Device Addresses

The Hectronic H6308 ETX Module uses the following device addresses on the SM bus. The I2C bus does not occupy any address.

Address	Usage	Note
A8h	BIOS EEPROM	Reserved
A0h	DDR Serial EEPROM	Reserved
Axh	Winbond 83627HF	Exakt address depends on BIOS configuration
5Ah	HW Monitor	only if equipped
90h	HW Monitor	only if equipped

6.6 I²C bus numbering

SM Bus	0	
I ² C Bus	1	
EDID Bus		0x10

6.7 PCI Mapping

Routing PCI-INT:

- LX800-INT A ← CPU-Core & PCI-INT A
- LX800-INT B ← PCI-INT B
- LX800-INT C ← PCI-INT C
- LX800-INT D ← LAN & PCI-INT D

PCI interrupts mapping can be changed in BIOS Setup Menu.

Routing PCI-Request/Grant (extended arbiter option)

- LX800-BREQ/GNT 2 ← CS5536
- LX800-BREQ/GNT 0 ← PCI-BREQ/GNT 0 on ETX Connector supported
- LX800-BREQ/GNT 0 ← PCI-BREQ/GNT 1 on ETX Connector supported
- LX800-BREQ/GNT 0 ← PCI-BREQ/GNT 2 on ETX Connector supported
- LX800-BREQ/GNT 1 ← PCI-BREQ/GNT 3 on ETX Connector supported
- LX800-BREQ/GNT 1 ← local LAN controller

Mapping PCI-IDSEL:

- LAN ← IDSEL = AD12
- *PCI-Slot1* ← *IDSEL = tbd (select on baseboard)*
- *PCI-Slot2* ← *IDSEL = tbd (select on baseboard)*
- *PCI-Slot3* ← *IDSEL = tbd (select on baseboard)*
- *PCI-Slot4* ← *IDSEL = tbd (select on baseboard)*

Note: The ETX Module implements an extended arbiter for up to four external PCI masters on REQ/GNT 0-3.

6.8 System Serial Buses

The module has 4 serial busses (I²C Bus like). The busses are provided by the following sources.

SM Bus (System management Bus)

- SM_CLK → GPIO14 (PinG3) of CS5536
- SM_DAT → GPIO15 (PinF1) of CS5536

FP DDC Bus (Flat Panel Data Display Channel)

- FP_DDC_CLK → GPIO8 (PinE3) of CS5536
- FP_DDC_DAT → GPIO9 (PinD1) of CS5536

I²C Bus (General purpose serial bus)

- I2C_CLK → GP14 (Pin125) of W83627HF
- I2C_DAT → GP15 (Pin124) of W83627HF

DDC Bus (Data Display Channel)

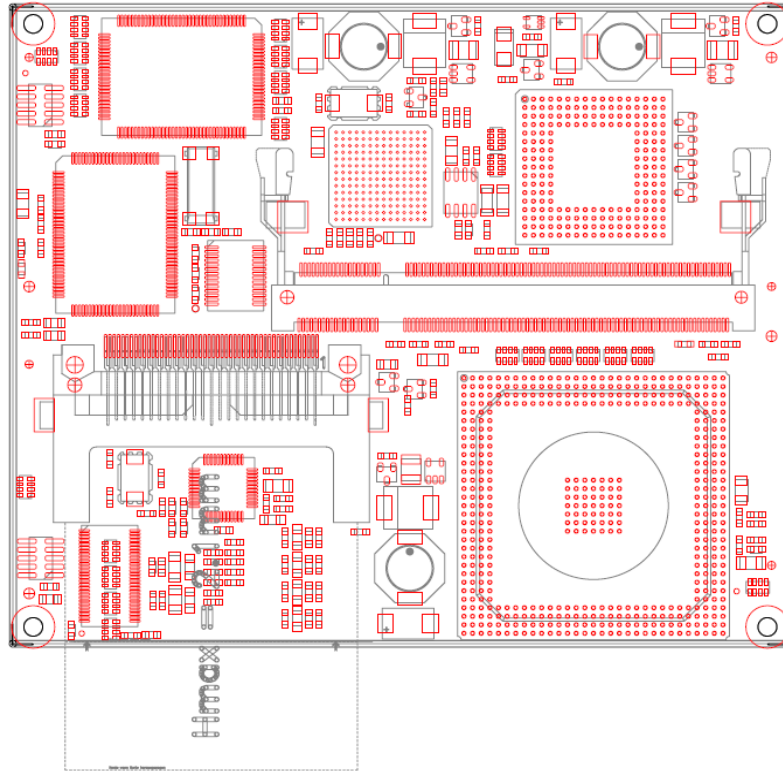
- DDC_CLK → GPIO3 (PinE1) of CS5536
- DDC_DAT → GPIO4 (PinE2) of CS5536

Note:

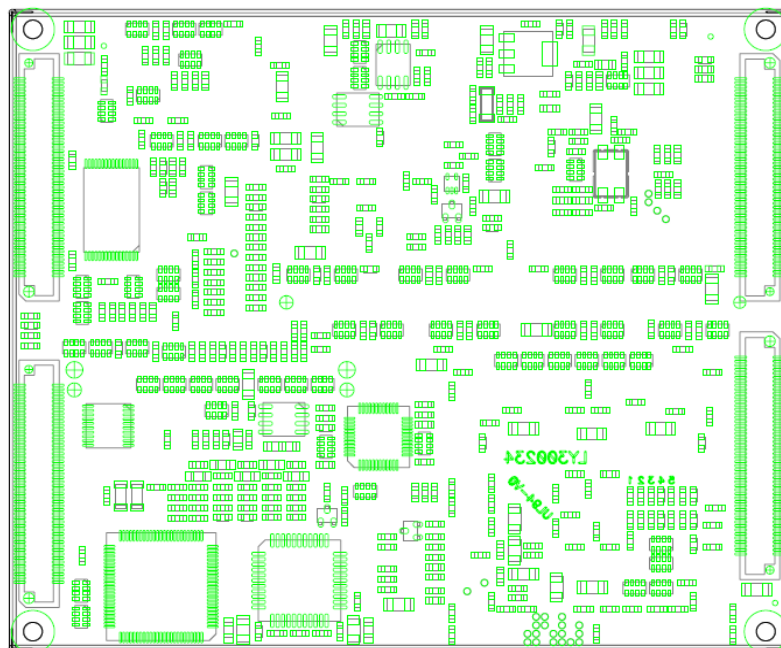
- I2C Bus pulled up with 1k to 5V.
- SM Bus pulled up with 2k7 to 3V3.
- FP DDC Bus pulled up with 1k to 3V3.
- DDC Bus pulled up with 1k to 3V3.

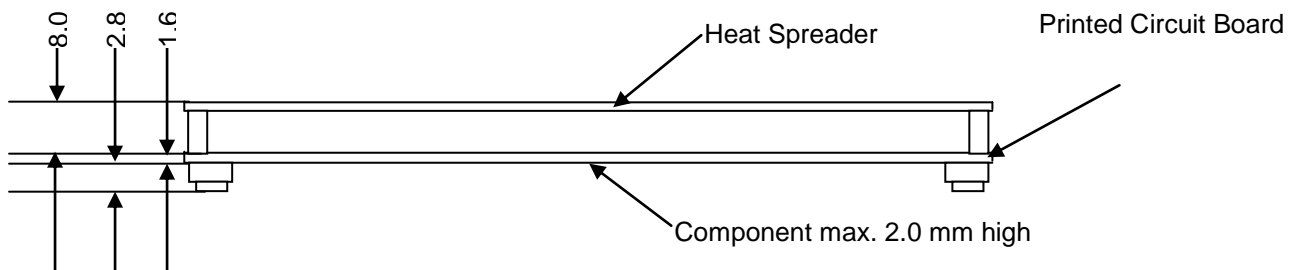
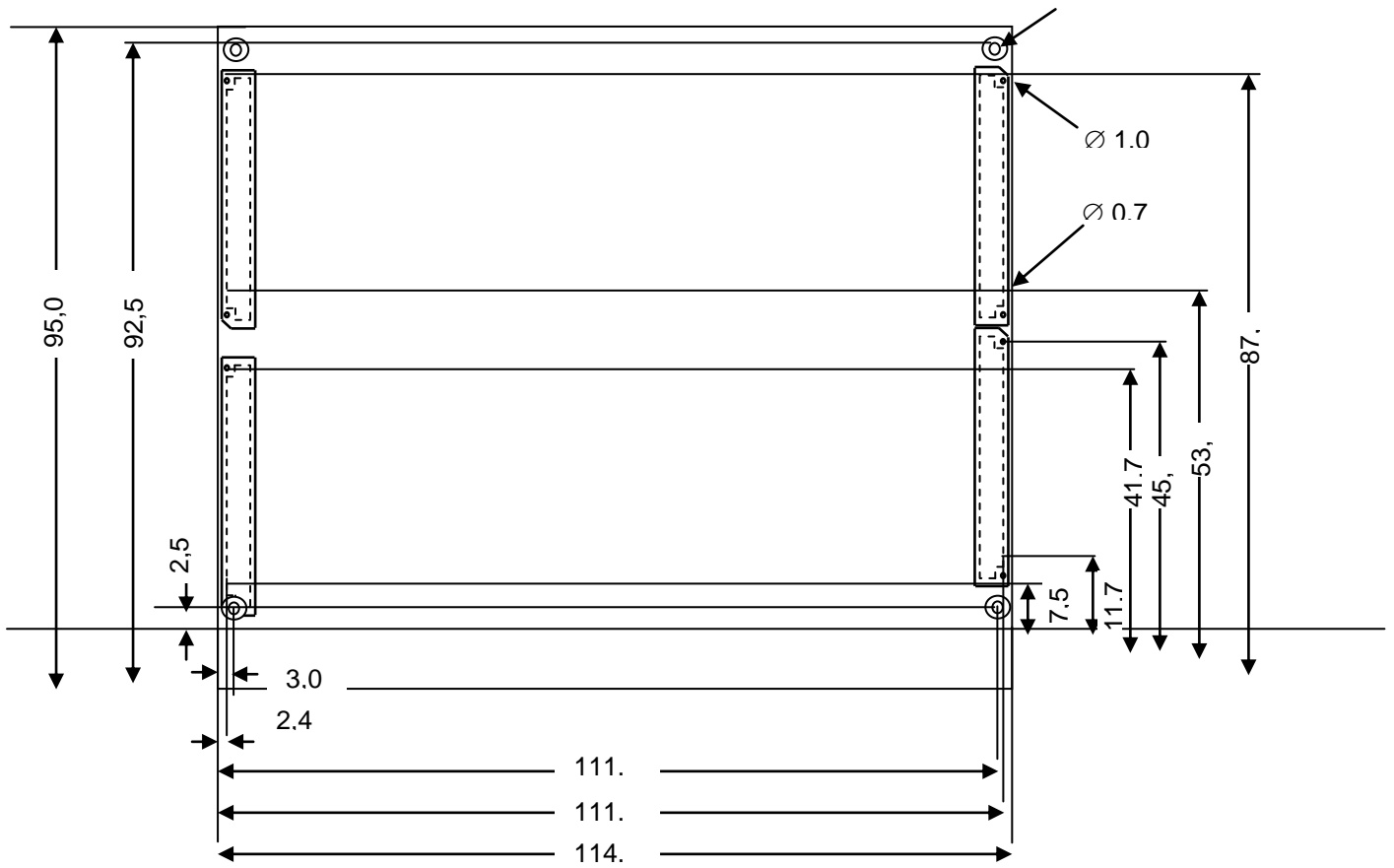
7 Mechanical Specification

Top view



Bottom view





8 Display Connection

8.1 Display Interface

ETX connector X3 provides all required signal on pin 1 ... 50 to connect flat-panel TFT Displays. Two different kinds of display interfaces are supported, depending of the model of the ETX module.

- LVDS Display Interface (TFT display)
- TTL Display Interface (TFT display)

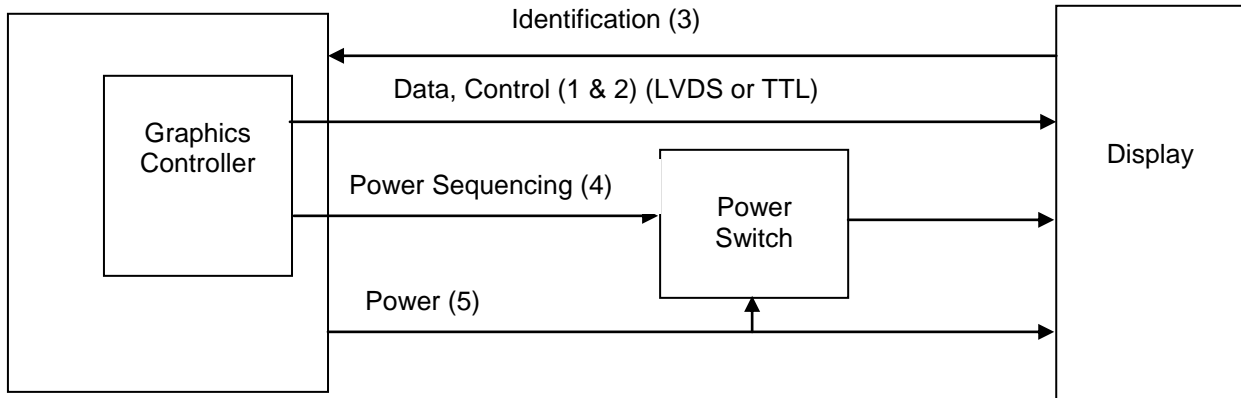
Note: STN or DSTN displays are not supported by the ETX module. To use (D)STN displays an additional converter chip is required.

LVDS Display Signals				TTL Display Interface			
Pin	Signal	Pin	Signal	Pin	Signal	Pin	Signal
1	GND	2	GND	1	GND	2	GND
3		4		3		4	
5		6		5		6	
7		8		7		8	
9	DETECT#	10		9	DETECT#	10	
11	LCDDO16	12	LCDDO18	11	B4	12	SHFCLK
13	LCDDO17	14	LCDDO19	13	B5	14	EN
15	GND	16	GND	15	GND	16	GND
17	LCDDO13	18	LCDDO15	17	B1	18	B3
19	LCDDO12	20	LCDDO14	19	B0	20	B2
21	GND	22	GND	21	GND	22	GND
23	LCDDO8	24	LCDDO11	23	G2	24	G5
25	LCDDO9	26	LCDDO10	25	G3	26	G4
27	GND	28	GND	27	GND	28	GND
29	LCDDO4	30	LCDDO7	29	R4	30	G1
31	LCDDO5	32	LCDDO6	31	R5	32	G0
33	GND	34	GND	33	GND	34	GND
35	LCDDO1	36	LCDDO3	35	R1	36	R3
37	LCDDO0	38	LCDDO2	37	R0	38	R2
39	VCC	40	VCC	39	VCC	40	VCC
41	FPDDC_DAT	42	LTGIO0	41	FPDDC_DAT	42	VSYNC
43	FPDDC_CLK	44	BLON#	43	FPDDC_CLK	44	BLON#
45	BIASON	46	DIGON	45	HSYNC	46	DIGON
47		48		47		48	
49		50		49		50	

The signals are divided into four groups:

1. Pixel information signals
2. Image control signals
3. Identification
4. Power and backlight control signals
5. Power and ground

Depending on the interface type the signals of 1. and 2. are electrically LVDS or TTL signals.



Principle of display connection

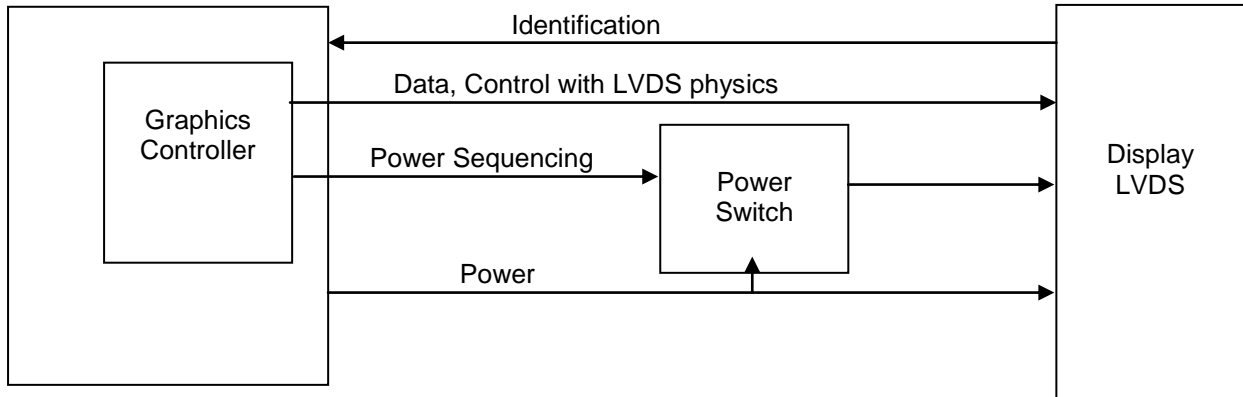
8.1.1 LVDS Interface

The LVDS interface is used in applications where the distance between module and display exceeds 30 cm. This interface may be used in conjunction with displays with built in LVDS interface or with TTL displays and an additional converter module, converting the LVDS signals to TTL signals on the display side. With LVDS displays connect the LCDDO0...LCDDO19 and the required supplies simply to the LVDS interface of the display. It is important, that the ETX module only supports single channel 18-bit LVDS interfaces. The 24-bit LVDS interface is not compatible with 18-bit LVDS interfaces. 24-bit single channel TFT support has to be checked individually for each display. Refer to the documentation of the converter module if you use an LVDS to TTL converter for information how to connect the TTL display to the signal lines.

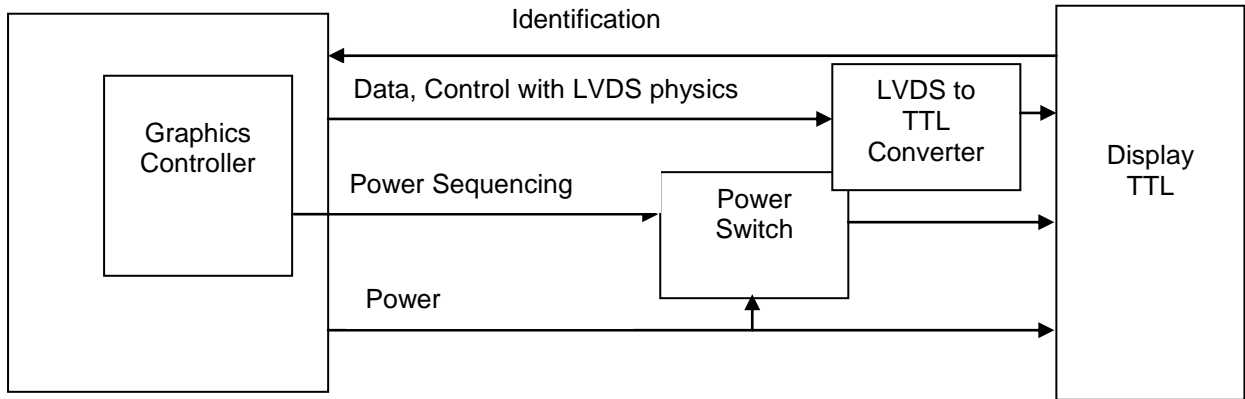
The ETX module can be configured to support a subset of dual channel 24-bit LVDS displays. Currently, there are two different LVDS signal mappings commonly used. Some display can select one of these two signal mappings, other displays use only one fixed mapping. The ETX module supports the following LVDS signal mapping for dual channel 24-bit displays. The same table applies to single channel 24-bit LVDS displays, except that there is only one channel instead of the two (odd and even) channels.

LVDS channel	Signal mapping
Odd, Channel 0	RedOdd2, RedOdd3, RedOdd4, RedOdd5, RedOdd6, RedOdd7, GreenOdd2
Odd, Channel 1	GreenOdd3, GreenOdd4, GreenOdd5, GreenOdd6, GreenOdd7, BlueOdd2, BlueOdd3
Odd, Channel 2	BlueOdd4, BlueOdd5, BlueOdd6, BlueOdd7, NotUsed, NotUsed, DE
Odd, Channel 3	RedOdd0, RedOdd1, GreenOdd0, GreenOdd1, BlueOdd0, BlueOdd1, NotUsed
Even, Channel 0	RedEven2, RedEven3, RedEven4, RedEven5, RedEven6, RedEven7, GreenEven2
Even, Channel 1	GreenEven3, GreenEven4, GreenEven5, GreenEven6, GreenEven7, BlueEven2, BlueEven3

Even, Channel 2	BlueEven4, BlueEven5, BlueEven6, BlueEven7, HSync, VSync, DE
Even, Channel 3	RedEven0, RedEven1, GreenEven0, GreenEven1, BlueEven0, BlueEven1, NotUsed



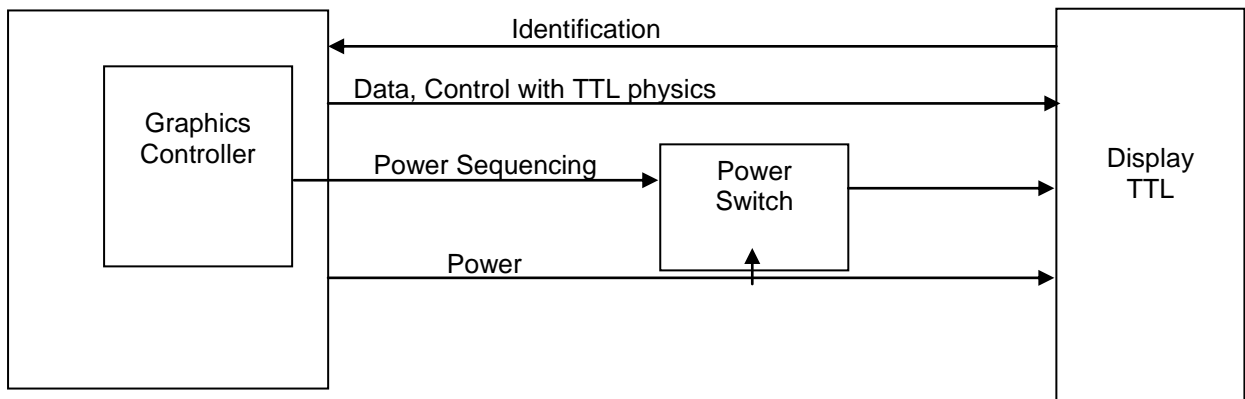
Principle of display connection with LVDS components



Principle of display connection with LVDS controller and TTL display.

8.1.2 TTL Interface

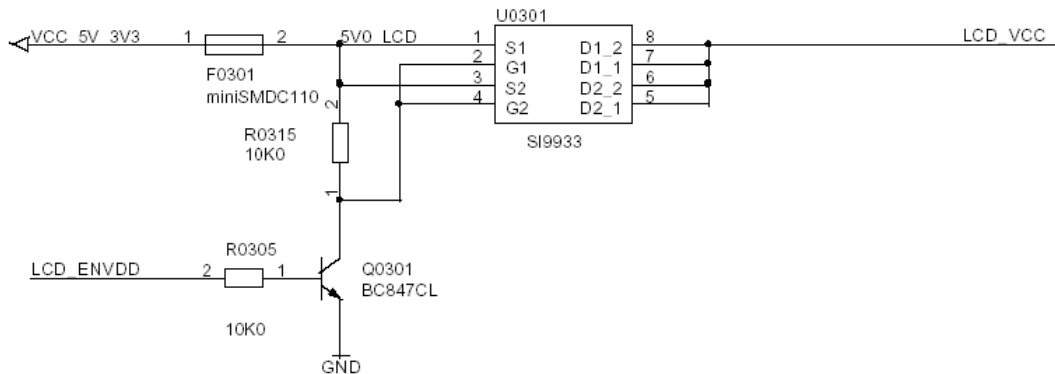
The TTL interface is preferred in applications where the distance between module and display is below 30 cm because TTL displays are cheaper than LVDS displays. Pay attention to lead the signal cable in distance to electro magnetic noise to ensure a proper display quality. In some cases a cable shield is needed to meet the EMC requirements.



Principle of display connection with TTL controller and TTL display.

8.1.3 Power Switch

Most flat-panel displays need a special power sequencing. For these displays a power switch is needed which is not a part of the ETX module and usually located on the carrier board (the board which carries the ETX module). The power switch is controlled by the ETX module via the signal DIGON. The ETX module ensures that the signal voltage of the data and control signals is only applied if the display power is switched on.



Example of a power switch. The signal LCD_ENVDD corresponds with the DIGON signal.

Most backlight inverter provides an enable input to control the light. In this case use the BLON# to control the inverter (BLON# is active low). If there is no enable input, a similar circuit is needed for the switch of the 12VDC backlight supply. Note, an additional inverter is needed (see power switch figure) because the BLON# signal is active low while the DIGON signal is active high.

8.1.4 Signals ETX Module <-> TFT Display with TTL Signalling

X3-LCD-Interface ETX Module		Connect to	TFT TTL-Connection	
Net Name	Number		Net Name	Number
LCD_VSYNC	42	<==>	VSYNC	*4
LCDDO0_R0	37	<==>	R0	*4
LCDDO1_R1	35	<==>	R1	*4
LCD_ENVDD (DIGON)	46	PowerSwitch 1	-	-
LCDDO2_R2	38	<==>	R2	*4
LCDDO3_R3	36	<==>	R3	*4
LCD_HSYNC	45	<==>	HSYNC	*4
LCDDO4_R4	29	<==>	R4	*4
LCDDO5_R5	31	<==>	R5	*4
GND	*1	<==>	GND	*4
LCDDO6_G0	32	<==>	G0	*4
LCDDO7_G1	30	<==>	G1	*4
GND	*1	<==>	DPS	*1
LCDDO8_G2	23	<==>	G2	*4
LCDDO9_G3	25	<==>	G3	*4
FPDDC_DAT	41	<==>	-	-
LCDDO10_G4	26	<==>	G4	*4
LCDDO11_G5	24	<==>	G5	*4
FPDDC_CLK	43	<==>	-	-
LCDDO12_B0	19	<==>	B0	*4
LCDDO13_B1	17	<==>	B1	*4
DETECT#	9	<==>	-	-
LCDDO14_B2	20	<==>	B2	*4
LCDDO15_B3	18	<==>	B3	*4
GND	*1	<==>	GND	*1
LCDDO16_B4	11	<==>	B4	*4
LCDDO17_B5	13	<==>	B5	*4
GND	*1	<==>	GND	*1
LCD_SHFCLK	12	<==>	CLK	*4
LCD_EN	14	<==>	DE	*4
BLON#	*2	PowerSwitch 2		
GND	*1	<==>	GND	*1
GND	*1	<==>	GND	*1
VCC_5V_3V3	*2	PowerSwitch 1	VCC via Power Switch	*4
VCC_12V	*3	PowerSwitch 2	VCC 12VDC	*4

*1 connect to Ground

*2 connect to 5VDC or 3V3DC as required

*3 connect to 12VDC if required

*4 connect to the corresponding display contacts

8.1.5 Signals ETX Module <-> TFT Display with LVDS Sign. (18 Bit)

X3-LCD-Interface ETX Module		Connect to	TFT TTL-Connection	
Net Name	Number		Net Name	Number
LCD_VSYNC	42	<==>		*4
LCDDO0_R0	37	<==>	LVDS0-	*4
LCDDO1_R1	35	<==>	LVDS0+	*4
LCD_ENVDD (DIGON)	46	PowerSwitch 1	-	-
LCDDO2_R2	38	<==>	LVDS1-	*4
LCDDO3_R3	36	<==>	LVDS1+	*4
LCD_HSYNC	45	<==>	-	*4
LCDDO4_R4	29	<==>	LVDS2-	*4
LCDDO5_R5	31	<==>	LVDS2+	*4
GND	*1	<==>	GND	*4
LCDDO6_G0	32	<==>	LVDS3-	*4
LCDDO7_G1	30	<==>	LVDS3+	*4
GND	*1	<==>	GND	*1
LCDDO8_G2	23	<==>	LVDS3-	*4
LCDDO9_G3	25	<==>	LVDS3+	*4
FPDDC_DAT	41	<==>	-	-
LCDDO10_G4	26	<==>	-	-
LCDDO11_G5	24	<==>	-	-
FPDDC_CLK	43	<==>	-	-
LCDDO12_B0	19	<==>	-	-
LCDDO13_B1	17	<==>	-	-
DETECT#	9	<==>	-	-
LCDDO14_B2	20	<==>	-	-
LCDDO15_B3	18	<==>	-	-
GND	*1	<==>	-	-
LCDDO16_B4	11	<==>	-	-
LCDDO17_B5	13	<==>	-	-
GND	*1	<==>	-	-
LCD_SHFCLK	12	<==>	-	-
LCD_EN	14	<==>	-	-
BLON#	*2	PowerSwitch 2		
GND	*1	<==>	GND	*1
GND	*1	<==>	GND	*1
VCC_5V_3V3	*2	PowerSwitch 1	VCC via Power Switch	*4
VCC_12V	*3	PowerSwitch 2	VCC 12VDC	*4

*1 connect to Ground

*2 connect to 5VDC or 3V3DC as required

*3 connect to 12VDC if required

*4 connect to the corresponding display contacts

8.2 Resolution and Timings

The graphics controller of the module (built in the AMD Geode LX800 CPU) supports the following display resolutions and timings:

Table 6-32. Display Modes

Resolution	Color Depth (bpp)	Refresh Rate (Hz)	Dot Clock (MHz)	Min. GLIU Frequency (MHz)
640 x 480	8, 16, or 24/32	60	25.175	75
	8, 16, or 24/32	70	28.560	75
	8, 16, or 24/32	72	31.500	75
	8, 16, or 24/32	75	31.500	75
	8, 16, or 24/32	85	36.000	75
	8, 16, or 24/32	90	37.889	400
	8, 16, or 24/32	100	43.163	400
800 x 600	8, 16, or 24/32	60	40.000	75
	8, 16, or 24/32	70	45.720	75
	8, 16, or 24/32	72	49.500	75
	8, 16, or 24/32	75	49.500	75
	8, 16, or 24/32	85	56.250	75
	8, 16, or 24/32	90	60.065	400
	8, 16, or 24/32	100	68.179	400
1024 x 768	8, 16 or 24/32	60	65.000	75
	8, 16, or 24/32	70	75.000	100
	8, 16, or 24/32	72	78.750	100
	8, 16, or 24/32	75	78.750	100
	8, 16, or 24/32	85	94.500	100
	8, 16, or 24/32	90	100.187	400
	8, 16, or 24/32	100	113.310	400
1152x864	8, 16, or 24/32	60	81.600	100
	8, 16, or 24/32	70	97.520	100
	8, 16, or 24/32	72	101.420	200
	8, 16, or 24/32	75	108.000	200
	8, 16, or 24/32	85	119.650	200
	8, 16, or 24/32	90	129.600	400
	8, 16, or 24/32	100	144.000	400

Table 6-32. Display Modes (Continued)

Resolution	Color Depth (bpp)	Refresh Rate (Hz)	Dot Clock (MHz)	Min. GLIU Frequency (MHz)
1280 x 1024	8, 16, or 24/32	60	108.000	200
	8, 16, or 24/32	70	129.600	200
	8, 16, or 24/32	72	133.500	200
	8, 16, or 24/32	75	135.000	200
	8, 16, or 24/32	85	157.500	200
	8, 16, or 24/32	90	172.800	400
1600 x 1200	8, 16, or 24/32	60	162.000	200
	8, 16, or 24/32	70	189.000	200
	8, 16, or 24/32	72	198.000	233
	8, 16, or 24/32	75	202.500	233
	8, 16, or 24/32	85	229.500	266
	8, 16, or 24/32	90	251.182	400
1920x1440	8, 16, or 24/32	60	234.000	266
	8, 16, or 24/32	70	278.400	400
	8, 16, or 24/32	72	288.000	400
	8, 16, or 24/32	75	297.000	400
	8, 16, or 24/32	85	341.349	400
	Television Modes			
720x483 SD NTSC	up to 32	59.94i	27.000	200
640x480 SD NTSC	up to 32	up to 60.00i	27.000	200
768x576 SD PAL	up to 32	50.00i	27.000	200
720x576 SD PAL	up to 32	50.00i	27.000	200
1280x720 HD	up to 32	up to 60.00i	up to 74.750	200
1280x768 HD	up to 32	50.00i	74.750	200
1440x720 HD	up to 32	60.00i	74.750	400
1440x768 HD	up to 32	50.00i	74.750	400
1920x1080 HD	up to 32	up to 60.00i	up to 148.500	400

9 Power Management and Power Control

The ETX module will work in standard ATX and AT mainboards (AT mainboards will typically not provide a POWER_BUTTON signal).

For application with extremely low power budgets, the ETX module provides a Suspend-To-Ram Standby Mode.

Typical Power Consumption values for the ETX module are:

CPU Mode	Power Consumption 5V	Power Consumption 5V, StandBy
Windows XP Idle	4 W	1 W
Windows XP, maximum CPU and MEM usage	5 W	1.5 W
Suspend-To-RAM	0 W	0.133 W

10 External ports COM3 and COM4

The BIOS supports external COM ports COM3 and COM4 residing in a SMSC37C669 super IO chip. These ports have to be enabled in BIOS setup before use.

The installation procedure is:

- Disable ports COM3 and COM4 in the BIOS setup.
- Install Windows with at least the hardware drivers for Ethernet, Audio and Video.
- Reboot and enter BIOS setup.
- Enable the ports in the BIOS setup:
 - COM3 : 0x3e8, IRQ10
 - COM4 : 0x2e8, IRQ11
- Check that no PCI interrupt conflicts with any ISA interrupt.
- Install the COM ports under Windows as new but known hardware using windows' own drivers.

11 Windows Installation Hints

Sometimes Windows (especially Windows XP) cannot be installed from USB CD Rom drive to CF Card. In most cases formatting the CF card or copying files fails.

- If formatting fails, it may help to format the CF card using Windows 2000 FAT32 on a normal desktop PC before installing Windows XP.
- If copying files fails try to disable USB EHCI. This mostly works.

12 Thermal management, Environment

Operating Temperature (ambient): 0°C .. +60°C
Storage Temperature: -25°C .. +85°C

When using the ETX module in high temperature environment please ensure that CPU LX800 and chipset CS5536 do not exceed the maximum case temperature of +85°C. Above ambient temperatures of +55°C a specific cooling concept for the system should be developed.

13 Post Codes

Checkpoint	Intermediate	Codes Function Description
F0h	F0h	XpressROM code execution start
80h	---	User added code to be run first
00h	60h	First SIO access, Core SIO initialize, LPT can be mapped to I/O 80h for embedded devices to provide POST code output.
01h	---	Chipset level clock initialize
02h	---	I/O based Geode initialize
03h	---	Create a 32-bit real mode descriptor
04h	---	Memory mapped I/O based Geode initialize
05h	---	Geode CPU tests
	20h	Test entry
	28h - 2Fh	Test stepping ID (2Fh = Test Failed)
	2Ah	Test feature
	2Eh	Test passed exit
06h	---	Autosize memory controller DIMM1 and DIMM0
	70h	Set the clock drive strength and shift value, mask the clocks
	72h	Set the data, address, and control drive, clear reference timer and VGA wrap
	73h	Set the register to indicate no DIMMs installed
	74h	Default CAS latency to 3
	75h or 7Fh	Memory sizing (7Fh = No memory located)
	76h	Do refresh
	7Eh	MemSetup exit
07h	---	Setup a stack
	90h or 9Fh	Create stack (9Fh = Stack creation failure)
	9Eh	Stack setup exit
08h	---	Test memory address lines
	B0h	Test memory
	BEh	Memory test exit
	BFh	Memory test failed (i.e., B0h)
09h	---	Copy ROM from F000:0000 to RAM at F000:0000
0Ah	---	SDRAM optimization for CPU speed
0Bh	---	Autosize and initialize Cache
	CFh	Cache failed to size to 16 KB (i.e., 0Bh failed)
0Ch	---	Load Geode North Bridge PCI register space
	E8h	Begin register initialize
0Dh	---	Load CS55x0 with values aka south bridge
	E0h	Begin register initialize
0Eh	---	SIO test/initialize
	60h	SIO test entry

	61h	SIO present / register initialize
	6Eh	SIO test exit
0Fh	---	Various PC/BIOS compatibility pieces
10h	---	Set up generic interrupt table
16h	---	Set up BDA for installed hardware
11h	---	Query memory controller for RAM size, and store it
14h	---	Wake up the keyboard controller
12h	---	SMI Handler, video, keyboard, hard drives, splash screen, LCD
	D0h	Get shadow ready for copy
	D1h	Decompress all images
	D2h	Call SMI Handler initialization code
	D3h	Return from SMI Handler initialize VGA BIOS
	D4h	Initialize LCD Panel
	D5h	Display splash screen
	D6h	Hard Disk Drive Initialize
	D7h	System option ROM scan and initialize / PCI32 fixup
	DEh	romCopy exit
15h	---	Wiggle cache - if MTEST enabled, cache remains off
82h	---	Additional BDA initialization, CMOS initialization
17h	---	Scan PCI bus and enumerate
18h	---	Scan and call options ROMs from C800-EFF0
19h	---	Reset all descriptors to real mode 1 MB size
81h	---	User added code to be run right before boot
1Ah	---	Display summary screen
1Bh	---	Attempt to boot via INT 18h then INT 19h
1Fh	---	Boot failure - system halted