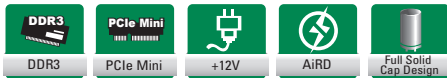
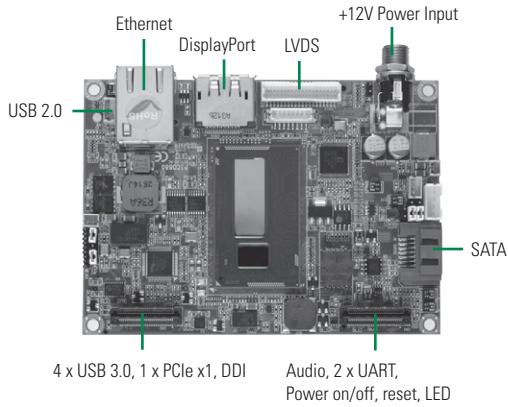


PICO880

5th/4th Generation Intel® Core™ i7/i5/i3 & Celeron® Processor Pico ITX SBC with DP/LVDS, 1 GE & Audio



System

CPU	5th/4th Generation Intel® i7/i5/i3 and Celeron® processor
System Memory	1 x 204-pin DDR3L-1600 SO-DIMM max. up to 8 GB
Chipset	SoC integrated
BIOS	AMI
SSD	N/A
Watchdog Timer	255 levels, 1~255 sec.
Expansion Interface	1 x Full-Size Mini PCI Express Mini Card with mSATA supported 1 x PCIe x1, 2 x UART, 1 x DDI, 4 x USB 3.0, and 1 x HD audio (through expansion connector)
Battery Lithium	Lithium 3V/220mAH
Power Input	DC power jack connector +12V DC-in only AT Auto Power On function supported
Power Requirements	Intel® Core™ i7-4650U @ 1.7 GHz, 2 GB DDR3L Max. RMS. +12V @ 2.95A Intel® Core™ i5-4300U @ 1.9 GHz, 2 GB DDR3L Max. RMS. +12V @ 2.55A Intel® Core™ i3-4010U @ 1.7 GHz, 2 GB DDR3L Max. RMS. +12V @ 1.84A Intel® Celeron® 2980U @ 1.6 GHz, 2 GB DDR3L Max. RMS. +12V @ 1.75A Intel® Core™ i7-5650U @ 2.2 GHz 8GB DDR3L Max. RMS. +12V @ 3A Intel® Core™ i5-5350U @ 1.8 GHz 8GB DDR3L Max. RMS. +12V @ 2.8A Intel® Core™ i3-5010U @ 2.1 GHz 8GB DDR3L Max. RMS. +12V @ 2A
Size	100 x 72 mm
Board Thickness	1.6 mm
Temperature	-20°C ~ +70°C (-4°F ~ 158°F), operation
Relative Humidity	10% ~ 95% relative humidity, non-condensing

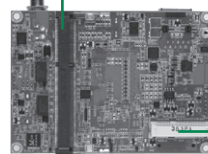
I/O

MIO	N/A
SATA	1 x SATA-600
Hardware Monitoring	Detect CPU/system temperature and voltage
Ethernet	1 port as 10/100/1000 Mbps supports Wake-on-LAN, PXE Boot ROM with Intel® i218LM
Audio	HD Codec audio as MIC-in/Line-out with Realtek ALC662
USB	1 x USB 2.0
SMBus	System Management Bus for advanced monitoring/control
Digital I/O	N/A

Features

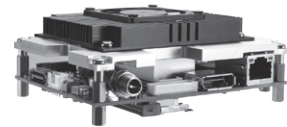
- 5th/4th Generation Intel® Core™ i7/i5/i3 and Celeron® processor (Broadwell/Haswell)
- 1 DDR3L SO-DIMM supports up to 8 GB memory capacity
- Intel® AMT 9.5 supported
- 1 Full-Size PCI Express Mini card with mSATA
- +12V DC-IN
- 2 optional I/O boards, AX93275 and AX93276

DDR3L SO-DIMM



▲ Rear view

Full-size PCI Express Mini Card w/mSATA supported



▲ Assembly view

Display

Chipset	Intel® integrated Gfx graphic engine
Memory Size	Share System memory
Display Interface	1 x LVDS; 18/24-bit single/dual channel 1 x DisplayPort

Packing List

Standard

Quick installation guide, User's Manual/Utility CD and accessories

Accessories

Part Number	Description	Qty
59403208000E	SATA cable	1
594P8800600E	SATA power cable	1
594P8802800E	USB cable	1
59190400500E	Fan cable	1
5078H880010E	Heatspreader for 4th Gen Intel® Core™ processor	1
5078H100100E	Heatsink with fan	1
5078H880000E	Heatspreader for 5th Gen Intel® Core™ processor	1

Ordering Information

Standard

PICO880PGA-i7 4650U (P/N: E38H880102)	4th Generation Intel® Core™ i7-4650U 1.7 GHz Pico-ITX SBC with DP/LVDS, GbE LAN, 1 USB 2.0
PICO880PGA-i5 4300U (P/N: E38H880103)	4th Generation Intel® Core™ i5-4300U 1.9 GHz Pico-ITX SBC with DP/LVDS, GbE LAN, 1 USB 2.0
PICO880PGA-i3 4010U (P/N: E38H880100)	4th Generation Intel® Core™ i3-4010U 1.7 GHz Pico-ITX SBC with DP/LVDS, GbE LAN, 1 USB 2.0
PICO880PGA-CELERON 2980U (P/N: E38H880104)	4th Generation Intel® Celeron® 2980U 1.6 GHz Pico-ITX SBC with DP/LVDS, GbE LAN, 1 USB 2.0
PICO880PGA-i7 5650U (P/N: E38H880110)	5th Generation Intel® Core™ i7-5650U 2.2 GHz Pico-ITX SBC with DP/LVDS, GbE LAN, 1 USB2.0
PICO880PGA-i5 5350U (P/N: E38H880111)	5th Generation Intel® Core™ i5-5350U 1.8 GHz Pico-ITX SBC with DP/LVDS, GbE LAN, 1 USB2.0
PICO880PGA-i3 5010U (P/N: E38H880112)	5th Generation Intel® Core™ i3-5010U 2.1 GHz Pico-ITX SBC with DP/LVDS, GbE LAN, 1 USB2.0

Optional

AX93275 (P/N: E393275100)	I/O board for 1 x RS-232/422/485, 1 x RS-232, 4 x USB 3.0, 1 x VGA, 1 x Audio
AX93276 (P/N: E393276100)	I/O board for 1 x RS-232/422/485, 1 x RS232, 4 x USB 3.0, 1 x HDMI, 1 x Gigabit LAN

*For more Ordering Information, please visit Axiomtek's website.

* All specifications and photos are subject to change without notice.

